



strand pelletizers

conveyors

water baths

air knives

strand dewatering units

spare parts

# Cantilever Pelletizers

## BT25X

### Lab to light production

- 1-4 strands 1/8" (3mm) Dia.
- Standard 150 ft/min (45 m/min)
- Spring Activated UFR
- Easy Clean
- Dual Drive Standard, pellet length control on the fly
- AC Motors and NEMA 12 Enclosure



### Options

- Support Stand
- Integrated Air Knife
- Water Bath and Recirculation System
- Pneumatic Upper Feed Roll



## SB Series

### Lab to light production SB50 & SB100

- 1-15 Strands 1/8" (3mm) Dia.
- Push/Pull Rotor Gap Control
- Removable Feed Table
- Removable Discharge Chute
- Easy Clean
- Large Pneumatic Cylinder for Improved Pulling Force



### Options

- Dual Drive
- Digital Pellet Length Control
- Wear Package
- 2-100 Tooth Rotors
- Water Baths and Air Knife



## BP50

### Lab to light production

- 1-8 Strands 1/8" (3mm) Dia.
- Eccentric Rotor Gap Control
- Removable Feed Table
- Easy Clean



### Options

- Dual Drive / Digital Pellet Length Control
- Wear Package
- 2-64 Tooth Rotors
- Water Baths and Air Knife



## ZE Series

### Light to medium production ZE04 & ZE08

- 1-40 Strands 1/8" (3mm) Dia.
- Push/Pull Rotor Gap Control
- Pivoting Feed Table
- Removable Discharge Chute
- Easy Clean
- Bed Knife Holder Supported by ISO Plate



### Options

- Dual Drive / Digital Pellet Length Control
- Wear Package
- Extra Horsepower
- 32 Tooth Stellite Rotor Std., 2-120 Tooth Rotors
- Water Baths and Air Knife





# Dual Bearing Pelletizers

## AXP Series

### Medium production

#### AXP

- Available in 4", 6", 8", 12", or 16" (100mm, 150mm, 200mm, 300mm, 400mm)
- 1-80 Strands 1/8" (3mm) Dia.
- Serpentine Belt Drive
- Push/Pull or Eccentric Gap Control
- Rotor Ball Bearings
- Easy Clean Cutting Chamber
- Removable Discharge Chute
- Toolless Entry



#### Options

- Dual Drive / Digital Pellet Length Control
- Wear Package
- 32 Tooth Wedge Lock Rotor
- 16, 24, 48, 60 or 120 Tooth Rotors
- Custom Heights
- Work Platforms
- UFR Drive - Gearbox or Serpentine



## BXP & CXP Series

### Heavy production

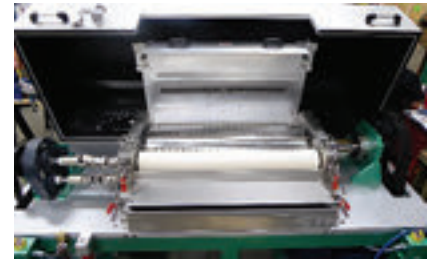
#### BX Series

- Available Sizes 8", 12", 20" (200, 300, & 500mm)
- 1-130 Strands 1/8" (3mm) Dia.
- Push/Pull or Eccentric Gap Control
- Toolless Entry



#### CXP Series

- Available Sizes 24", 32", 40" (600, 800 & 1000mm)
- 1-250 Strands
- 48 Tooth Stellite Rotor Standard
- 40 Tooth Wedge Lock Rotor optional
- Custom Heights
- Work Platforms
- Push/Pull Gap Control
- Rotor Isolation Coupler
- Toolless Entry



# Auto-Assist Strand Pelletizing Systems



## Wet-cut water slides

- 1-250 Strands 1/8" (3mm) Dia.
- Self-Stranding Assist Systems
- Fully Automated Systems
- Lab / Low Cost Version Available
- Turnkey Systems
- Improved Flow Sluice Box
- Complete Systems Designed for Specific Applications/Materials



## Dry-cut water slides

- 1-130 Strands 1/8" (3mm) Dia.
- Strands are Carried Down the Slide to the Belt; Water is Dropped off at the Belt
- Heat in Material Flashes Water Off the Strands
- Excess Water is Removed by Vacuum through the Belt and Positive Pressure above the Belt
- Designed for Specific Applications/Materials
- No Need for Post Cut Cooling
- Various Cooling and Flash Off Lengths Available



# Specialty Machinery

## Specialty Machinery for Long Fiber and Micro Pellets



### Long Fiber Pellets

- Line Speeds up to 300 ft/min (92 m/min)
- Cutting Gap of .0005" (.013mm)
- Cut Length to 2" (50mm)
- Reinforced Bed Knife
- Rotor Isolation Coupler
- Available in Lab or Large Production



### Micro Pellets

- Pellets from .06" to .005" (1.5mm to .127mm)
- Independent Drive for Feed Roll
- Precise Gap Control
- Proprietary Rotor Design (US Patent 7,393,201 B2)

## Pultrusion Strand Puller

### Cleated Belt Puller (Pultrusion)

- 24" (600mm) to 40" (1000mm) Widths Available
- Speeds Available 120 to 250 ft/min (36.5 to 76 M/min)
- Pull Force Available 4,000 to 6,000 lbs. (1815 to 2721 KG)
- Carbon Fiber Electrical Package Available
- Power, 10, 15, 20, 25, & 30 HP (7.5, 11, 15, 18, 22 KW) Available per Beam
- Can Be Interfaced with the Pelletizer
- Oscillating Strand Comb Promotes Even Cleat Wear
- Four Corner Pneumatic Cylinder Control of Upper Beam
- Optional Cleat Resurfacing Tool



## PH25 Pharma Pelletizer

- 316SS Material for Contact Parts
- Toolless Cutting Chamber Entry
- Dual Drive, Servo Motors
- Touch Screen Operator Controls
- Electronic Upper Feedroll Activation
- Optional Support Stand
- Historical Process Data Trend Charting.
- Logging of Process Data
- Recipe Storage
- Field Bus Diagnostics



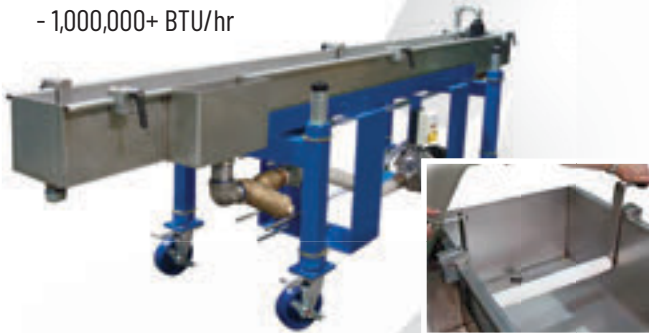


# Auxiliary Equipment



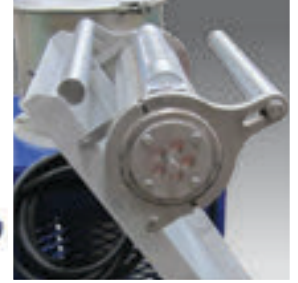
## WBX Water baths

- Sizes from
  - 6" wide x 6" deep x 6' long (150mm x 150mm x 1.8m) to
  - 30" wide x 12" deep x 30' long (762mm x 305mm x 9.1m)
- Vertical Adjustments
- Adjustable Overflow Weir
- Adjustable Spreader Bars
- Heavy-Duty Stainless-Steel Tank
- Painted Support Base
- Optional Water Recirculation Systems Available from
  - 3,000 BTU/hr to
  - 1,000,000+ BTU/hr



## Automated Die Wipe

- Fully Automated or Manual Operation
- Customized to Fit Most Die Bodies
- Blade Lifts Off Die Plate to Help Prevent Polymer from Sticking
- Guided Pneumatic Rodless Cylinder for Smooth Operation



## EVAK Series Vacuum Air Knives

- Available in 6", 12", 18", and 24" (150mm, 300mm, 450mm, and 600mm)
- Air Flow from 194 to 736 CFM (330 to 1250 m<sup>3</sup>/hr)
- Rust Free Material Contact Points
- Self-Contained Electrics, including Motor Starter
- Gravity Water Discharge
- Optional Remote Mounted Vacuum Head Available
- Optional Filter and Discharge Pump

## AK Air Knives

### Pressure Air Knife

- Available in 6", 12", 18", & 24" (150mm, 300mm, 450mm, 600mm)
- Air Flow from 335-1000 CFM (570 m<sup>3</sup>/hr to 1700 m<sup>3</sup>/hr)
- Rust Free Material Contact Points
- Air Nozzle is Open Ended to Assist Start Up



## VAK Series Vacuum Air Knives

- Available in 12", 16", 24" & 32" (300mm, 400mm, 600mm, and 800mm)
- Air Flow from 2,224-3,531 CFM (3,779 m<sup>3</sup>/hr to 5,999 m<sup>3</sup>/hr)
- Replaceable Cartridge Filter
- Two (2) Pressure Air Knives, mounted above a 14" (300mm) Vacuum Deck with Five (5) vacuum slots



# InduraMaxx™ Coating

- InduraMaxx™ is our proprietary feed roll material for resin manufacturing
- Provides optimal feed control and a uniform strand cut
- Superior wear properties and high heat capability (176 degrees C/350 degrees F)
- Options include durometer 65 Shore A and 90 Shore A to handle a range of plastic materials from soft and flexible to tough and rigid



## Service and Spare Parts

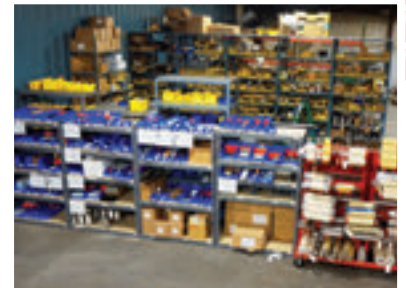
### Service

At Bay Plastics Machinery, our service is second to none. We are a family-owned business and we take pride in working closely with our customers. We consult with all of our customers to help them choose the best pelletizer and equipment for their needs, and work with them to ensure their success. When you work with Bay Plastics Machinery, you will have our entire sales, service and technical team on your side.



### Spare Parts

Bay Plastics Machinery offers spare parts for all makes of pelletizing systems, from feed rolls to new or repaired rotors, or even sharpening your existing rotors. We can supply parts for most models of Automatik, Cumberland, Scheer, Accrapak, or Reduction, and any other brand or model you have.



## The Bay Plastics Difference

Bay Plastics Machinery has served as a pioneer in bringing the manufacturing, sales and service of pelletizing technology to the North American marketplace. Because we have a rich history dating back to 1961, you can buy from Bay Plastics Machinery with confidence and expect performance. Located in Bay City, Michigan, we offer a complete line of strand pelletizers, conveyors, water baths, air knives/strand dewatering units and spare parts. Among our services: rotor sharpening, rebuild/repair, technical support and testing. Whatever your plastics industry needs, Bay Plastics Machinery stands ready to meet them.

Request a Quote



Bay Plastics Machinery  
3494 N. Euclid Ave, Bay City, MI 48706  
Phone: (989) 671-9630  
Email: [sales@BayPlasticsMachinery.com](mailto:sales@BayPlasticsMachinery.com)

Visit our Website to Learn More:  
[BayPlasticsMachinery.com](http://BayPlasticsMachinery.com)



Proudly designed, engineered, and manufactured in Bay City, Michigan, USA

